



Palm oil in processing companies

Louise Bünemann,
Danish Food and Drink Federation



Business Initiative for
Sustainable Palm Oil

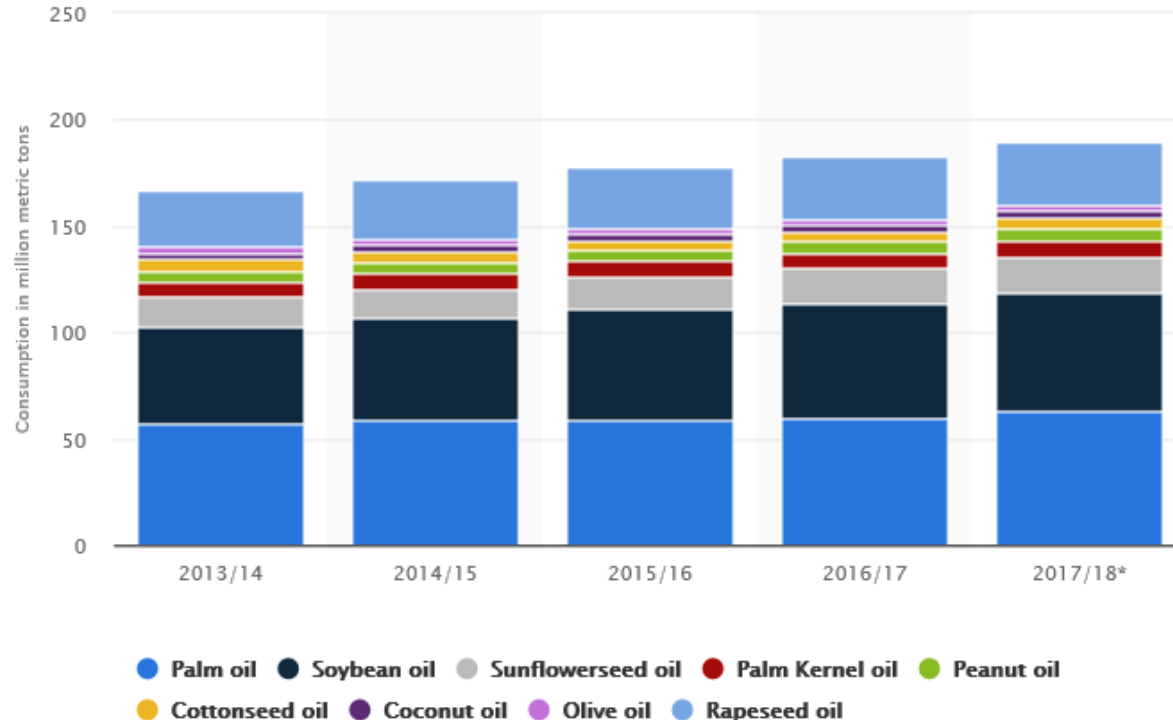
What is palm oil used for?

- More than half the products in the supermarket contain palm oil, i.e.:
 - confectionary
 - ice cream and ready-to-eat meals
 - the base for most liquid detergents, soaps, and shampoos
 - the base for lipstick, waxes, and polishes
- Used as an industrial lubricant
- Used as a cooking oil
- Used as a biofuel





Consumption of palm oil

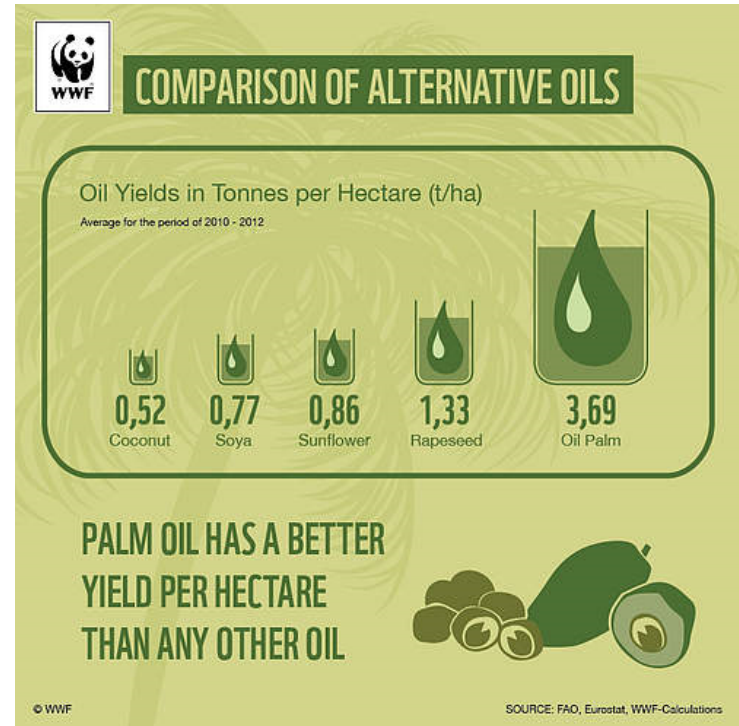


- Most widely used vegetable oil
- 1970: Yearly palm oil production stood 1 million tons
- 2016: 63 million tons.
- 90 % used in food industry

Source:
<https://www.statista.com/statistics/263937/vegetable-oils-global-consumption/>

Why palm oil?

- The most versatile oil
- Smooth and creamy texture
- Odorless
- Natural preservative effect
- The least expensive oil in the world – because it has the highest yield = more effective use of land





> 60 pct. of palm oil in DK is sustainable (=RSPO-certified)

RSPO-certified palm oil:

- 1) Commitment to transparency
- 2) Compliance with applicable laws and regulations
- 3) Commitment to longterm economic and financial viability
- 4) Use of appropriate good practice by growers and millers
- 5) Environmental responsibility and conservation of natural resources and biodiversity
- 6) Responsible consideration of employees, and of individual and communities affect by growers and mills
- 7) Responsible development of new plants
- 8) Commitment to improvement





Business Initiative for **Sustainable Palm Oil**

The initiative:

- ❖ By the end of **2016**: as a minimum all palm oil covered by Green Palm certificates
- ❖ By the end of **2018**: 100 % physical CSPO (segregated or identity preserved)
- ❖ Report on progress
- ❖ Task force including authorities and WWF
- ❖ Disseminate knowledge of sustainable palm oil and the RSPO
- ❖ Collect data for progress on the transition to sustainable palm oil

What have we learned?

- ❖ Working together with other stakeholders is important
- ❖ Boycott is the easy answer – we have to work harder to explain our way
- ❖ A challenge to collect data on specific amounts