

# Creating a deforestation free Palm Oil Supply Chain through improved monitoring and supplier engagement

13 June 2019 - Amsterdam Declaration Partnerships Multi-Stakeholder Meetings, Utrecht



# About Wilmar International



Over  
**900**  
manufacturing plants in  
**33**  
countries and regions\*



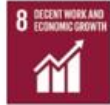
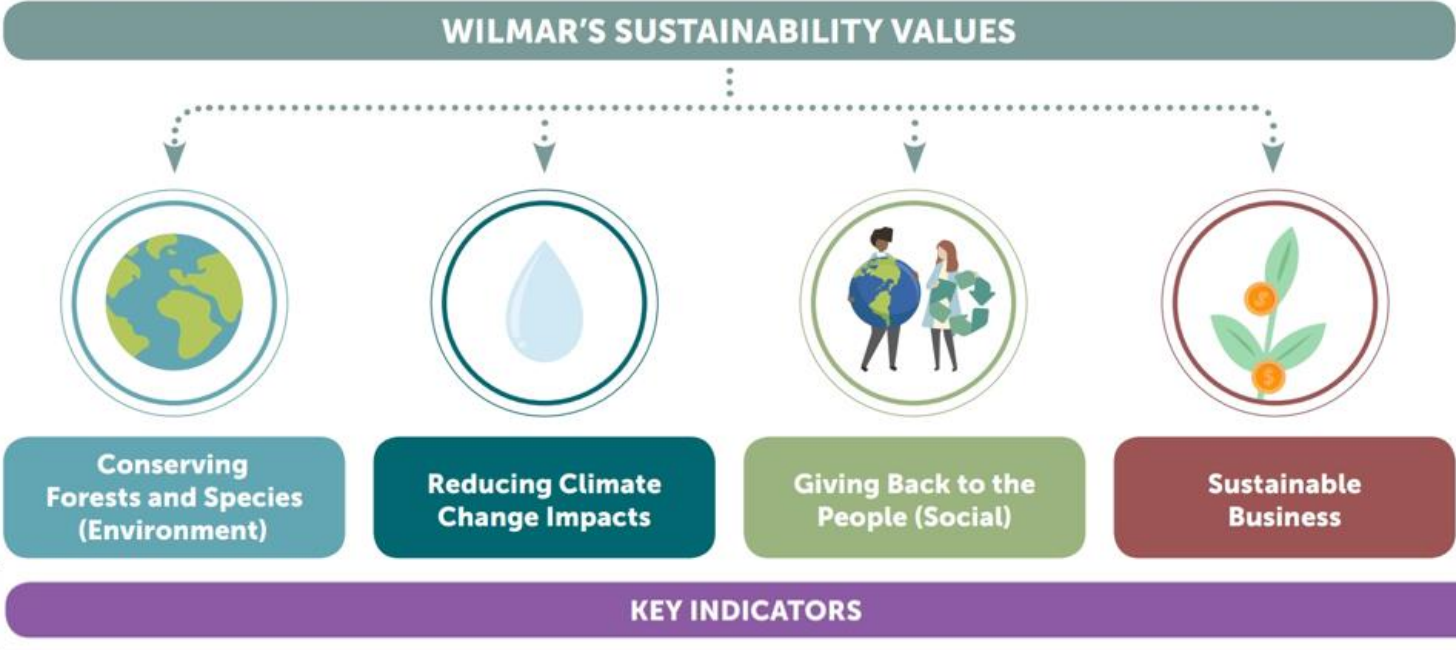
Extensive distribution  
network in China, India,  
Indonesia and some  
**50**  
other countries and  
regions



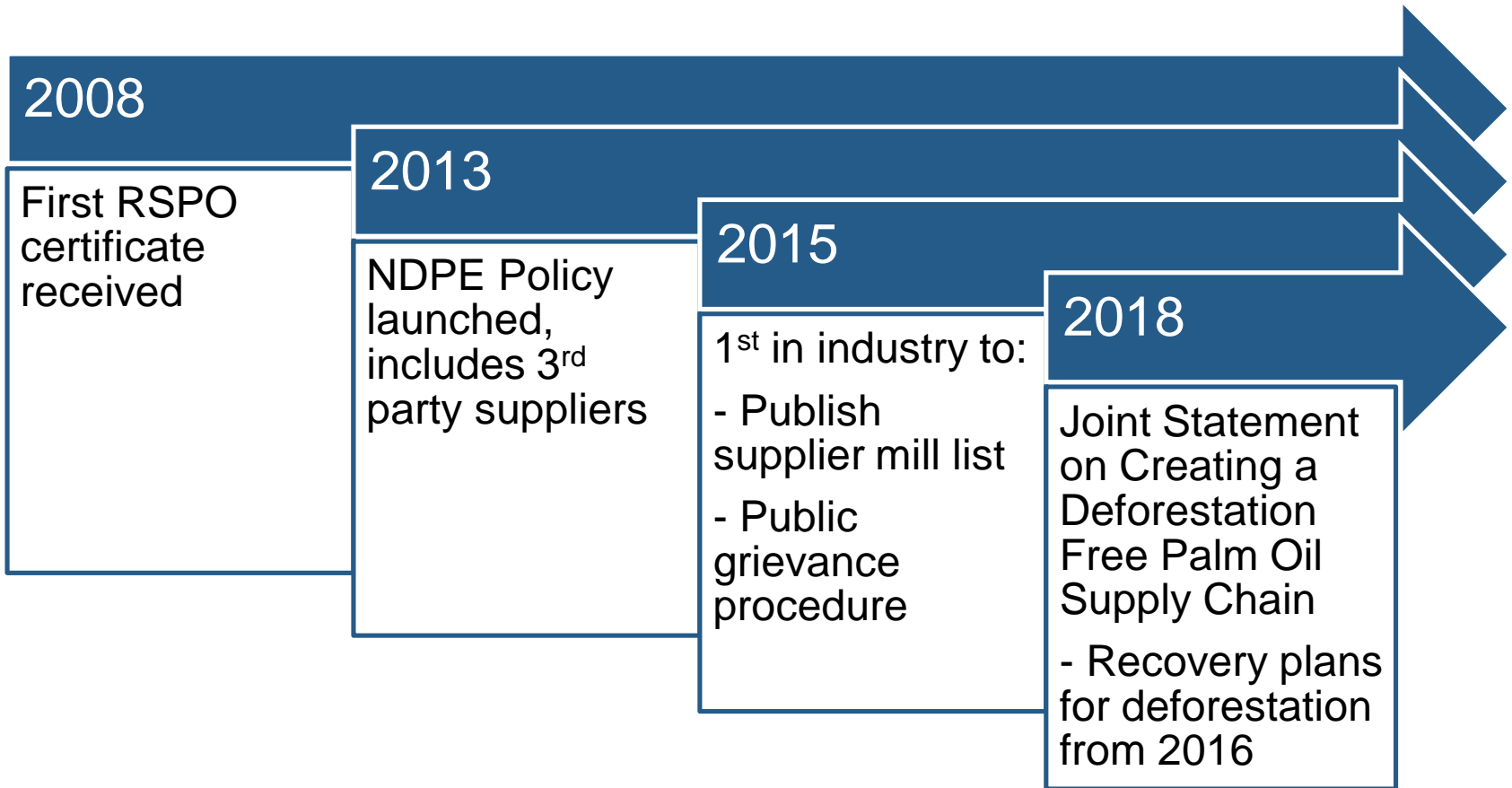
Multinational workforce  
of about  
**90,000**  
staff globally



# Wilmar's Sustainability Values



# Wilmar's Sustainability Timeline



# Building Blocks for NDPE compliance

## NO DEFORESTATION, NO PEAT AND NO EXPLOITATION POLICY



### Supplier monitoring covers:

- 14.75 million hectares monitored
- 201 parent groups covering 750 mills, representing approximately 1,500 plantations

# Supplier Monitoring

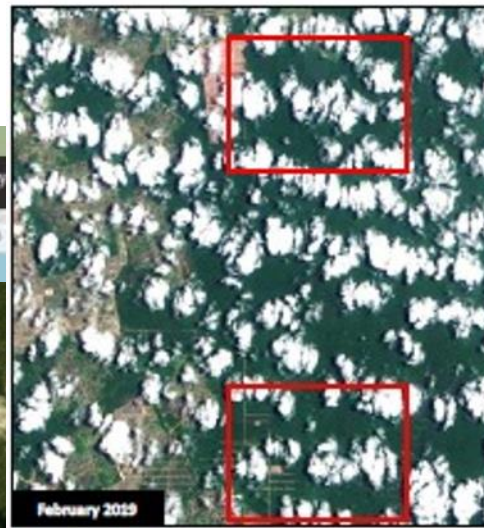
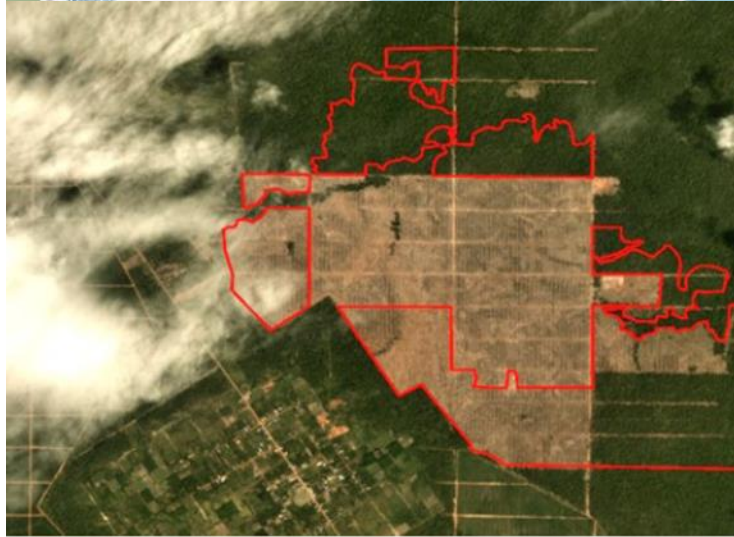
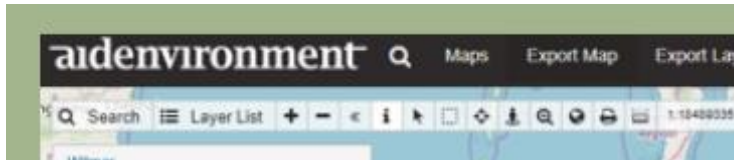


Table Monitoring Analysis Information :

	No Deforestation, No Peat*	2016-2018	Jan-Feb 2019	Mar 2019
Forest clearing (ha)		7,863	837	515
Peat forest clearing (ha)		0	0	0
Peat development (ha)		0	0	0
Endangered species	None			
Fire outbreak (2019)	None			
Additional Information*	Berdasarkan Forest Cover 2016 dari KLHK, lokasi terdeforestasi terletak di hutan sekunder dan berbatasan dengan kawasan HP (Hutan Produksi).			

Known buyers:



Confidence level: A

HGU, 2018

Planet



## More to come in 2019

- **May 2019 Wilmar launched our Human Rights Framework and Women's Charter**
- **Wilmar is currently engaging and working with other stakeholders to develop the “*Re-Engagement Protocol*”**
  - Several consultations have already taken place, involving NGOs and private sector, to discuss and work on developing the protocol.
- **Confirming the extent of liabilities for non-NDPE compliant activities related to deforestation and peat development between January 2016 to December 2018 to develop Supplier Recovery Plans**
- **Development of specific grievance handling of “No Exploitation” component with social NGOs**

# Thank you

## About Proboscis Monkeys

**Scientific name:** *Nasalis larvatus*



**Found in:** Borneo

**Interesting facts:** Arboreal, living in coastal areas and along rivers. One of the largest monkey species native to Asia, and known for its unusually large nose. A very aquatic primate.

**Diet:** Leaves, fruits, flowers, seeds and insects

**IUCN Red List species status:** Endangered

**Local status:** Protected in Malaysia and Borneo



## About Silvered Langurs

**Scientific name:** *Trachypithecus cristatus*

**Found in:** Peninsular Malaysia; Borneo; Sumatra, Indonesia

**Interesting facts:** Arboreal, living in coastal areas, mangrove and riverine forests. Specialist folivore (leaf-eating) and able to feed on tougher and more mature leaves than any of its close relatives.

**Diet:** Leaves, fruits, flowers and seeds

**IUCN Red List species status:** Near Threatened

**Local status:** Protected in Malaysia, Borneo and Indonesia

