

LIFE Institute

Lasting Initiative For Earth

LIFE International Standard for Territorial management,
PhD Regiane Borsato



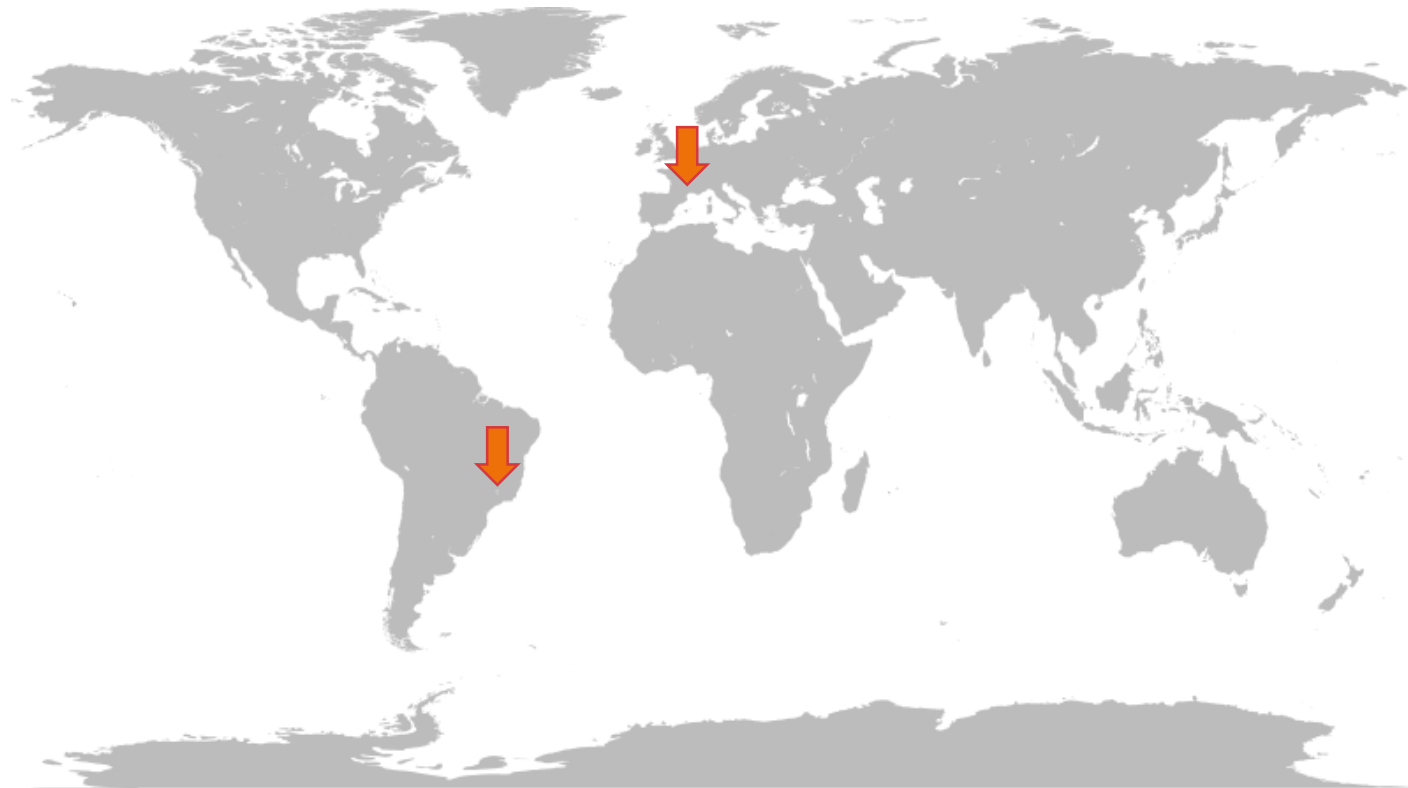
Who are we?

Non-profit organization, established in 2009, with headquarters in Curitiba in **Brazil** and representative in **France**.

LIFE Institute was created to promote the engagement of the business sector on biodiversity conservation and ecosystem services' maintenance.

What we do:

- ✓ LIFE Methodology for Business
- ✓ LIFE Certification
- ✓ International Standard for Sustainable Territorial Management



LIFE Methodology for Business - supporting Net Zero Deforestation

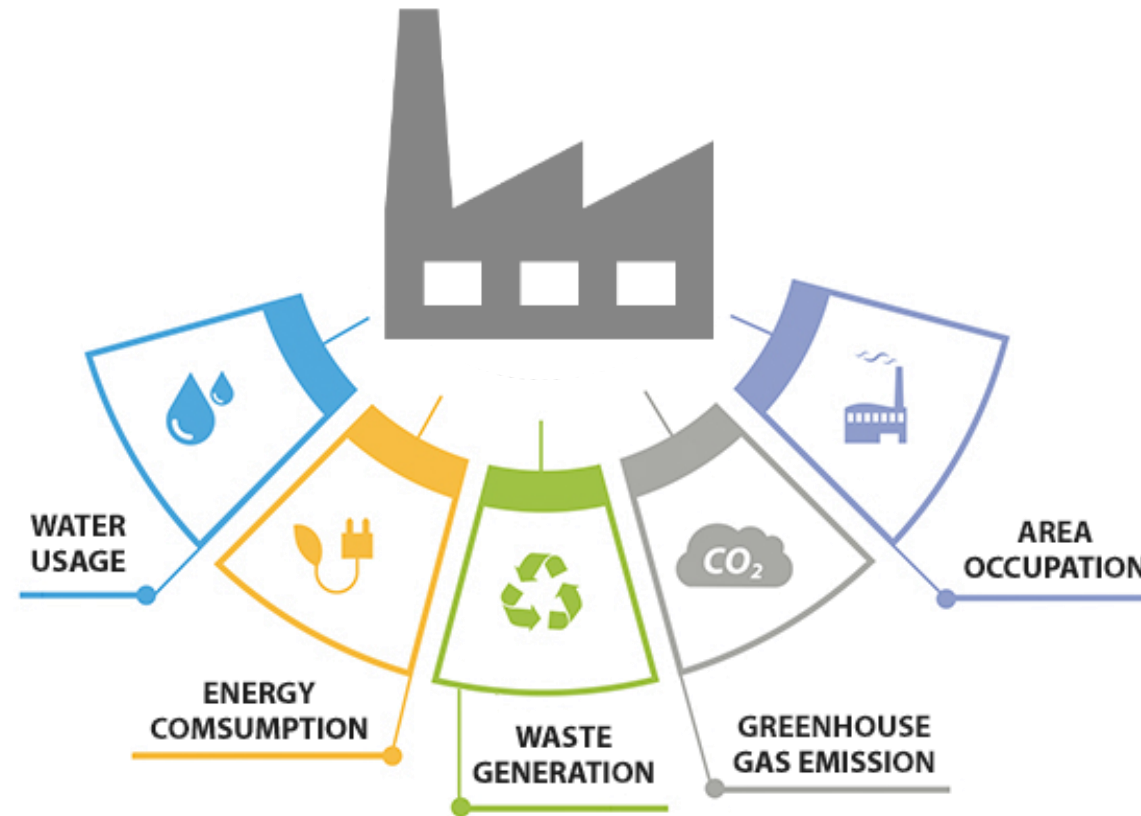
- Business involved with deforestation of High Conservation Areas or other Priority Areas
 - Are not eligible for LIFE Certification!
- Business related to other deforested areas (authorized by Law):
 - Must compensate at least 3 times the converted surface with natural protected areas
- Any business (any size and sector) are required to:
 - Calculate its pressure on ecosystem through Biodiversity Impact Index
 - Implement the best sectorial practices to minimize ecosystem's pressures
 - Promote a voluntary Plan for conservation and restoration of natural areas compatible to ecosystem's pressure

Assessing business pressure on ecosystems

Biodiversity Impact Index (BII)

References used by LIFE ecosystem risk metric (LIFE Technical Guide 01)

- MSA – Mean Species Abundance
- IPCC – Assessment Reports
- WRI – GHG Protocol
- WWF – Wildfinder (ecoregions)
- Water Footprint Network
- Official National Environmental Data
- Business Environmental Data and Status



Aspects

- QUANTITY
- SEVERITY

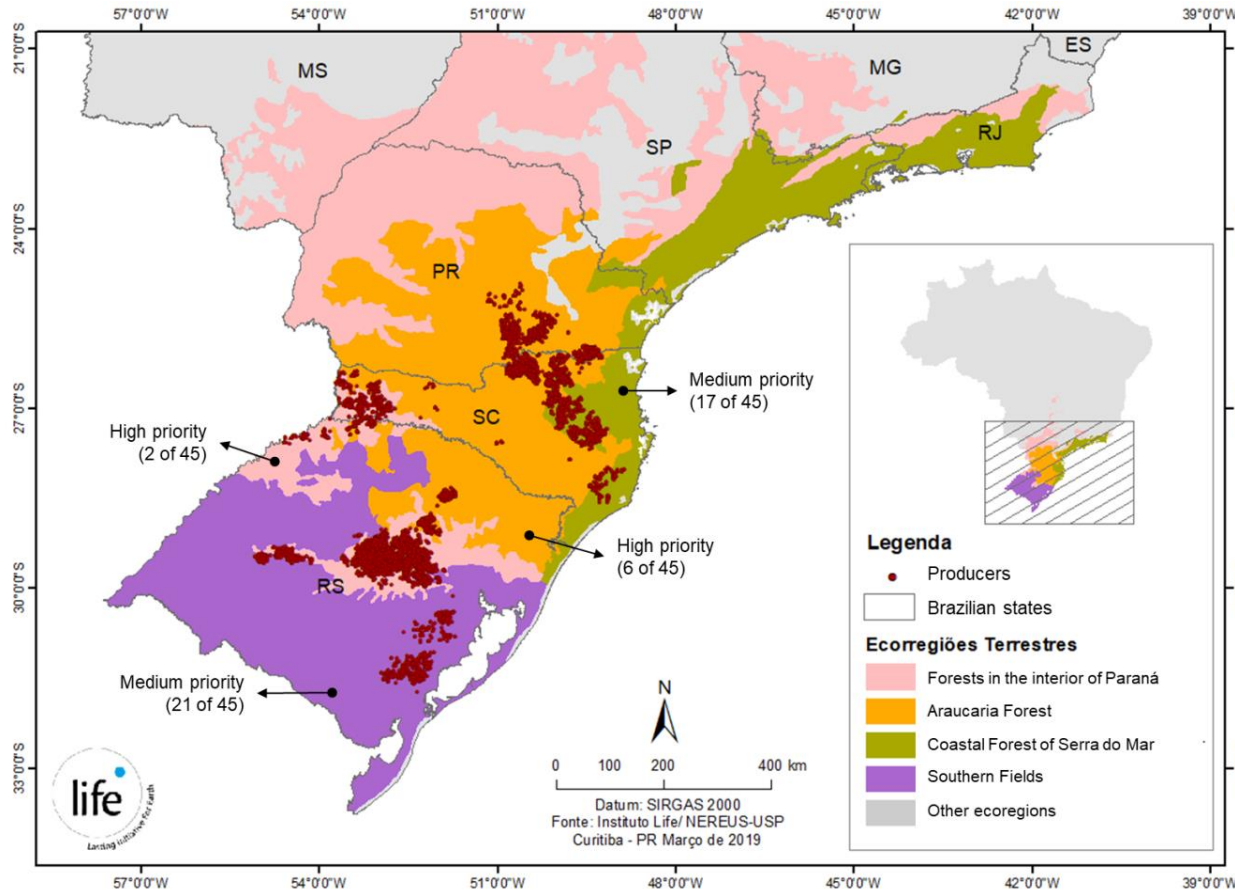
📍 Area

Total area occupied by operations (ha)

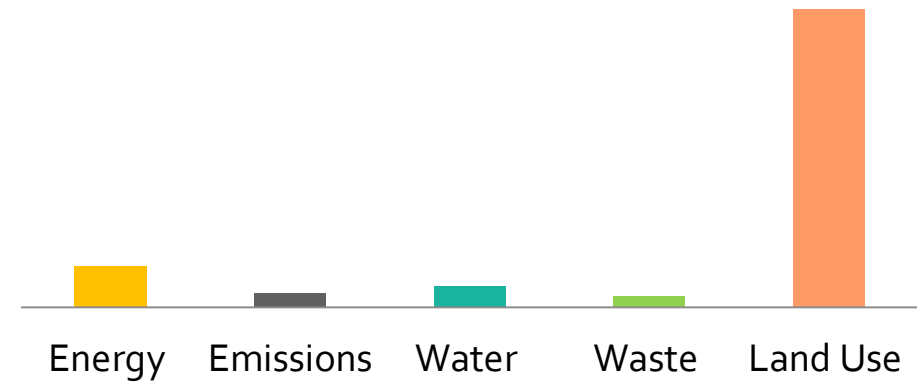
Fragility of the ecoregion

LIFE Methodology – Business Approach

Biodiversity Impact Index in a SUPPLY CHAIN CASE STUDY:



Pressure of 13.000 farming producers on ecosystems in southern Brazil
Impact analysis by environmental aspect



Most relevant environmental impact in the supply chain:
Land use in fragile ecosystems

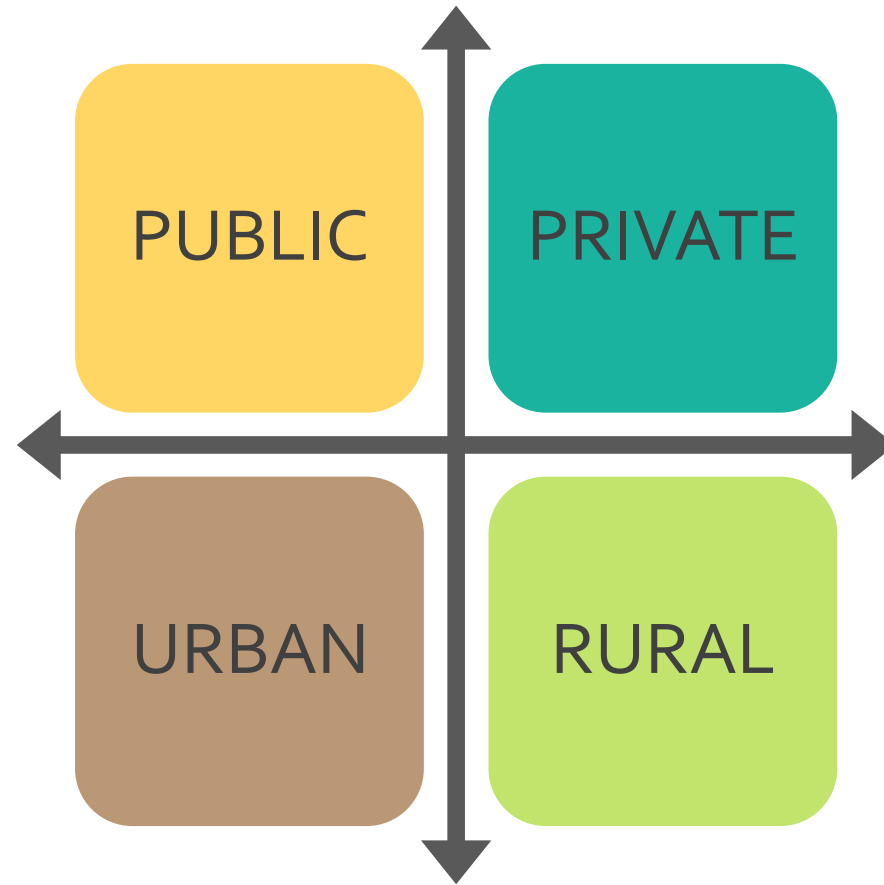
Conservation Strategic Plan (Focus):
Natural areas conservation and recovery to minimize ecosystems' pressures

Metrics consider impacts on local ecoregion and local hydrographic region.

International Standard on Sustainable Territorial Management

New Project

from “Business Approach” to “Territorial Management Approach”



TERRITORIAL GOVERNANCE

International Standard for Sustainable Territorial Management

04 Working groups and Thematic Axes:

- Resilience to Climate change
- Environmental Economy
- Landscape Management
- Sustainable agriculture
- Biodiversity Conservation
- Food safety
- Risk management
- Smart and sustainable cities
- Cultural heritage
- Traditional Communities
- Watersheds
- Industry and production
- Infrastructure



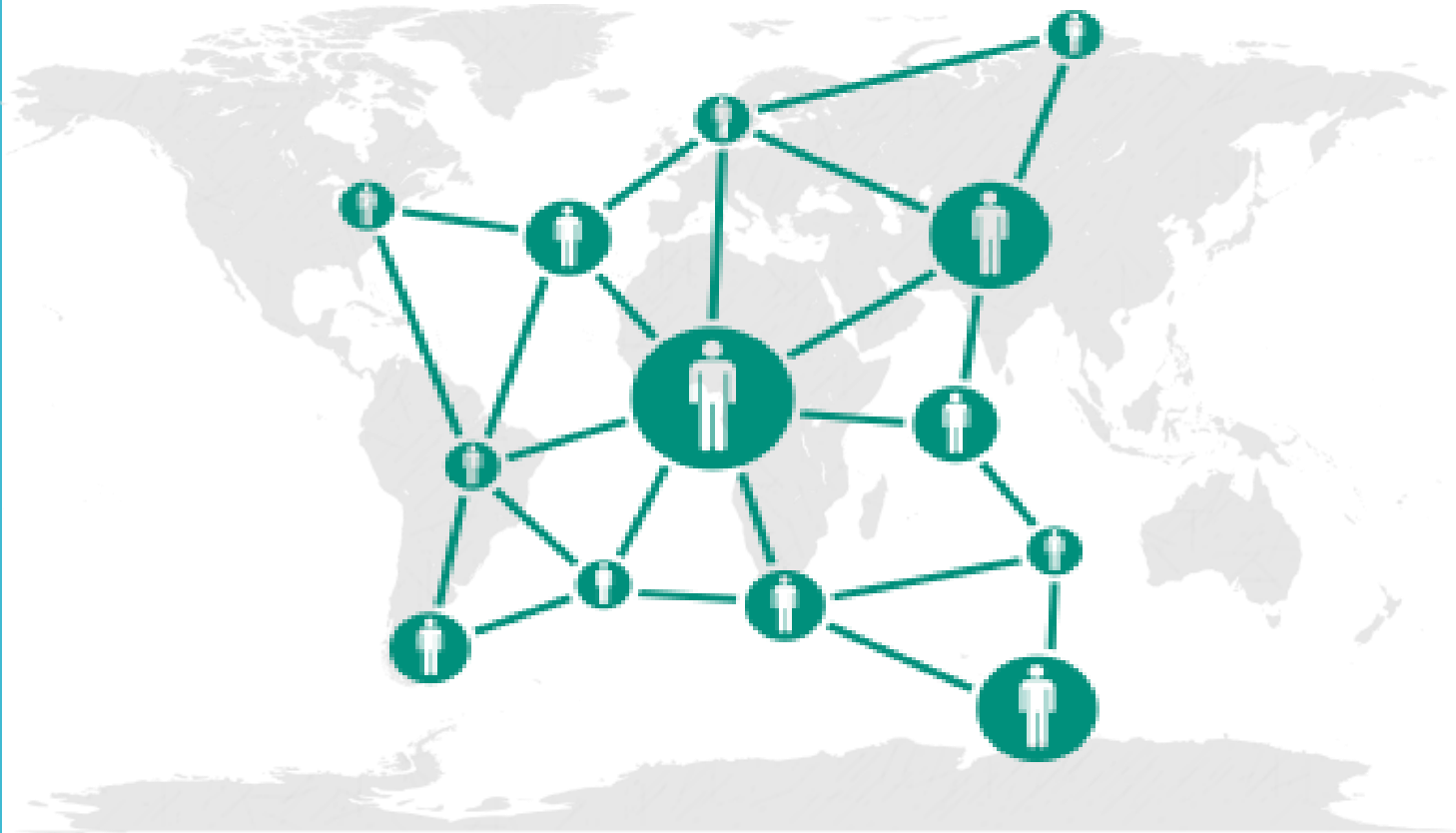
Standard based on
internationally recognized
principles, criteria and indicators.



Partners



LIFE Experts Network on Sustainable Territorial Management



Working groups and the LIFE expert network on territorial management:

- Cross-sectoral
- Interdisciplinary
- Integrated
- Tripartite (academia, civil society and private sector)

Are you interested in joining us in this project?

Contact:

contato@institutolife.org

LIFE Institute

Living and Producing in Harmony with Nature



Contact information:

Regiane Borsato

Technical Manager

regiane.borsato@institutolife.org



www.institutolife.org



[/lifecertification](https://www.facebook.com/lifecertification)



[/company/instituto-life](https://www.linkedin.com/company/instituto-life)